

Age by Sex Profile

Sample St. Louis Drive Time Summary Report
 -90.5151002786 38.6262112529626
 Drive Time: 3 minutes

Prepared By Business Analyst Desktop

Latitude: 38.626211

Longitude: -90.5151

Summary	Census 2000	2010	2015	2010-2015 Change	2010-2015 Annual Rate
Population	5,846	5,723	5,654	-69	-0.24%
Households	2,396	2,384	2,368	-16	-0.13%
Average Household Size	2.32	2.29	2.27	-0.02	-0.18%
Median Age	43.7	46.9	47.4	0.5	0.21%
Median Male Age	41.9	45.2	45.8	0.6	0.26%
Median Female Age	45.0	48.6	49.1	0.5	0.20%

Total Population by Age	Census 2000		2010		2015	
	Number	Percent	Number	Percent	Number	Percent
Total	5,845	100%	5,723	100%	5,654	100%
0 - 4	265	4.5%	254	4.4%	251	4.4%
5 - 9	332	5.7%	265	4.6%	265	4.7%
10 - 14	438	7.5%	332	5.8%	315	5.6%
15 - 19	360	6.2%	340	5.9%	299	5.3%
20 - 24	268	4.6%	306	5.3%	276	4.9%
25 - 29	272	4.7%	325	5.7%	332	5.9%
30 - 34	278	4.8%	272	4.8%	312	5.5%
35 - 39	371	6.3%	268	4.7%	304	5.4%
40 - 44	462	7.9%	336	5.9%	300	5.3%
45 - 49	454	7.8%	431	7.5%	357	6.3%
50 - 54	494	8.5%	469	8.2%	430	7.6%
55 - 59	401	6.9%	418	7.3%	434	7.7%
60 - 64	316	5.4%	422	7.4%	378	6.7%
65 - 69	270	4.6%	329	5.7%	379	6.7%
70 - 74	245	4.2%	256	4.5%	307	5.4%
75 - 79	204	3.5%	226	3.9%	237	4.2%
80 - 84	179	3.1%	205	3.6%	200	3.5%
85+	236	4.0%	269	4.7%	278	4.9%
18+	4,558	78.0%	4,651	81.3%	4,627	81.8%
21+			4,480	78.3%	4,479	79.2%

Data Note: Detail may not sum to totals due to rounding.

Source: U.S. Bureau of the Census, 2000 Census of Population and Housing. ESRI forecasts for 2010 and 2015.

June 20, 2012

Age by Sex Profile

Sample St. Louis Drive Time Summary Report
 -90.5151002786 38.6262112529626
 Drive Time: 3 minutes

Prepared By Business Analyst Desktop

Latitude: 38.626211
 Longitude: -90.5151

Male Population by Age	Census 2000		2010		2015	
	Number	Percent	Number	Percent	Number	Percent
Total	2,743	100%	2,684	100%	2,641	100%
0 - 4	133	4.8%	128	4.8%	127	4.8%
5 - 9	172	6.3%	129	4.8%	129	4.9%
10 - 14	215	7.8%	168	6.3%	160	6.0%
15 - 19	197	7.2%	189	7.0%	157	6.0%
20 - 24	118	4.3%	135	5.0%	129	4.9%
25 - 29	138	5.0%	160	5.9%	154	5.8%
30 - 34	142	5.2%	126	4.7%	151	5.7%
35 - 39	179	6.5%	136	5.1%	139	5.3%
40 - 44	202	7.4%	165	6.1%	147	5.6%
45 - 49	212	7.7%	210	7.8%	180	6.8%
50 - 54	234	8.5%	215	8.0%	212	8.0%
55 - 59	203	7.4%	200	7.4%	201	7.6%
60 - 64	152	5.5%	198	7.4%	178	6.7%
65 - 69	123	4.5%	156	5.8%	168	6.4%
70 - 74	112	4.1%	117	4.4%	146	5.5%
75 - 79	82	3.0%	94	3.5%	100	3.8%
80 - 84	66	2.4%	80	3.0%	79	3.0%
85+	62	2.3%	79	3.0%	84	3.2%
18+	2,086	76.0%	2,134	80.2%	2,119	80.2%

Female Population by Age	Census 2000		2010		2015	
	Number	Percent	Number	Percent	Number	Percent
Total	3,103	100%	3,039	100%	3,013	100%
0 - 4	132	4.3%	126	4.1%	124	4.1%
5 - 9	160	5.2%	136	4.5%	136	4.5%
10 - 14	223	7.2%	164	5.4%	155	5.1%
15 - 19	163	5.2%	151	5.0%	142	4.7%
20 - 24	150	4.8%	171	5.6%	147	4.9%
25 - 29	134	4.3%	165	5.4%	178	5.9%
30 - 34	136	4.4%	146	4.8%	161	5.3%
35 - 39	192	6.2%	132	4.3%	165	5.5%
40 - 44	260	8.4%	171	5.6%	153	5.1%
45 - 49	242	7.8%	221	7.3%	177	5.9%
50 - 54	260	8.4%	254	8.4%	218	7.2%
55 - 59	198	6.4%	218	7.2%	233	7.7%
60 - 64	164	5.3%	224	7.4%	200	6.6%
65 - 69	147	4.7%	173	5.7%	211	7.0%
70 - 74	133	4.3%	139	4.6%	161	5.3%
75 - 79	122	3.9%	132	4.4%	137	4.5%
80 - 84	113	3.6%	125	4.1%	121	4.0%
85+	174	5.6%	190	6.3%	194	6.4%
18+	2,473	79.7%	2,517	82.8%	2,507	83.2%

Source: U.S. Bureau of the Census, 2000 Census of Population and Housing. ESRI forecasts for 2010 and 2015.

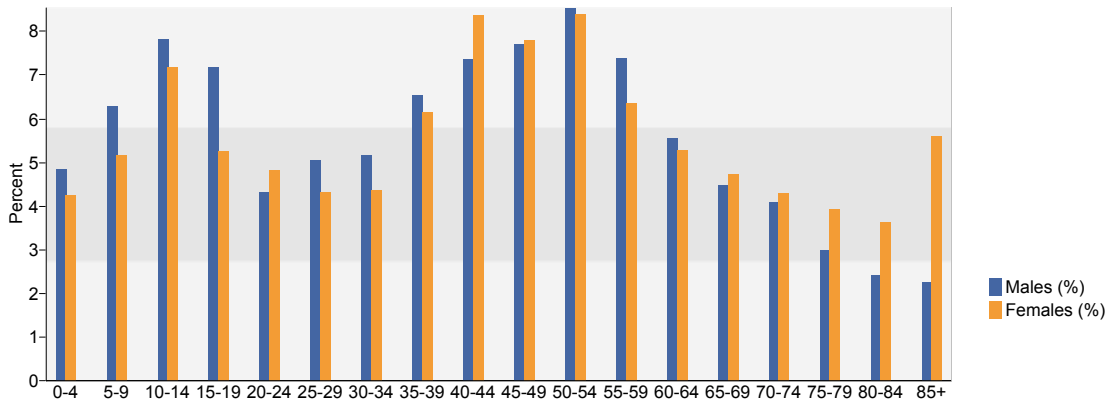
June 20, 2012

Age by Sex Profile

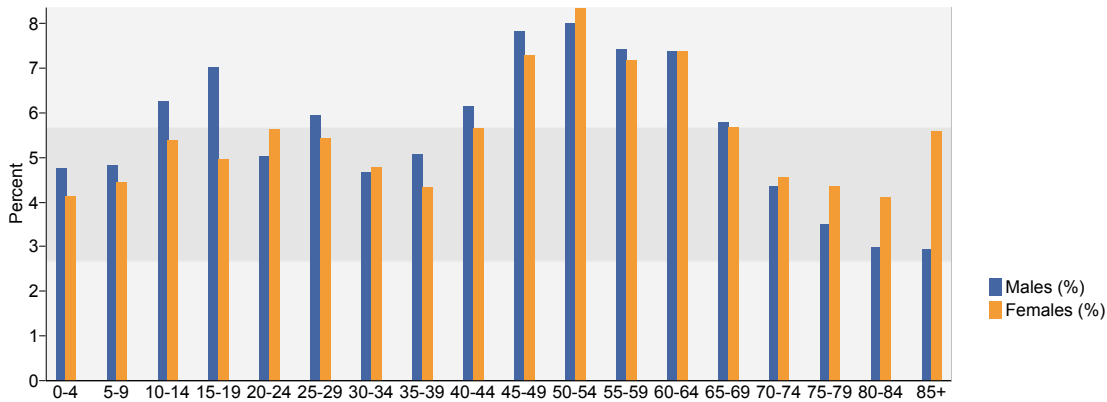
Sample St. Louis Drive Time Summary Report
 -90.5151002786 38.6262112529626
 Drive Time: 3 minutes

Prepared By Business Analyst Desktop
 Latitude: 38.626211
 Longitude: -90.5151

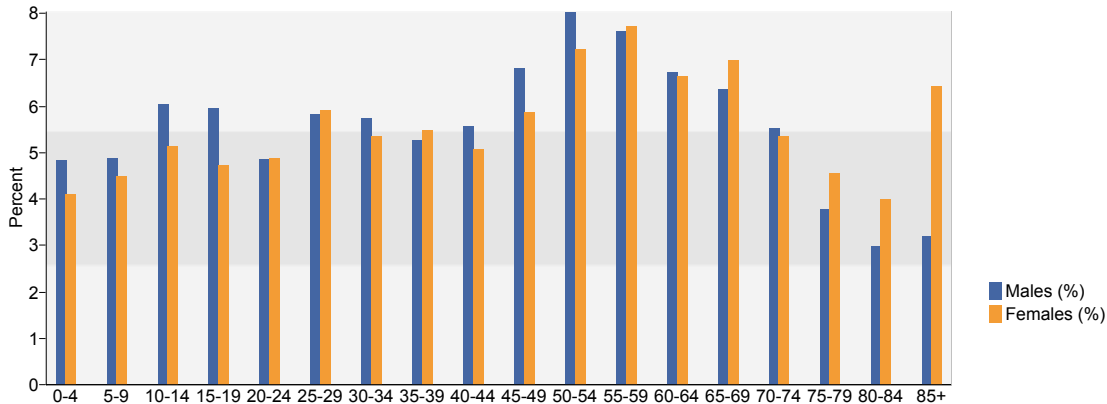
Census 2000 Population by Age and Sex



2010 Population by Age and Sex



2015 Population by Age and Sex



Source: U.S. Bureau of the Census, 2000 Census of Population and Housing. ESRI forecasts for 2010 and 2015.